

**IF YOU TEACH  
A SECOND  
LANGUAGE IN  
ALBERTA, YOU  
NEED TO BE A  
MEMBER OF  
SLIC!**

## **WHY BE A SLIC MEMBER?**

### **A FEW OF THE ADVANTAGES OF A SLIC MEMBERSHIP:**

- Professional membership for your CV portfolio
- Grants, Bursaries, Awards and Project Funding
- Special Interest Groups (SIGs): Arabic, French, German, Intercultural, Japanese, Mandarin, Polish, Punjabi, Spanish and Ukrainian.
- Annual PD Events
- Zephyr (Newsletter)- 4 issues
- Notos (Academic Journal)-2 issues
- Network of Language Teachers
- Partnerships
- Advocacy
- Educational Technologies



Second Languages and  
  
Intercultural Council

# **HOW SLIC ARE YOU?**

**SECOND LANGUAGE AND  
INTERCULTURAL COUNCIL**



# ARE YOU A MEMBER OF SLIC?

- Every ATA member can have **one free membership** in a specialist council. (Secondary memberships are available for a nominal annual fee.) Make SLIC yours!
- Once a SLIC member, choose up to two **SIGs** (Special Interest Groups), e.g. French and Spanish or German and Intercultural.

# HOW DO YOU KNOW IF YOU ARE A SLIC MEMBER?

- You receive emails from slic\_ata about second language information and events in the province
- You receive the SLIC newsletter, Zephyr and research journal, Notos
- You can find out on the ATA website, [www.teachers.ab.ca](http://www.teachers.ab.ca)



Second Languages and  
Intercultural Council

# WHAT WE DO

The Second Languages and Intercultural Council (SLIC) of the Alberta Teachers' Association enables Alberta teachers to become more aware of the issues around the teaching and learning of culture and second languages. SLIC acts through the Association as an advocate for the advancement, celebration and promotion of second languages and intercultural education.

SLIC activities are rooted in four focus areas:

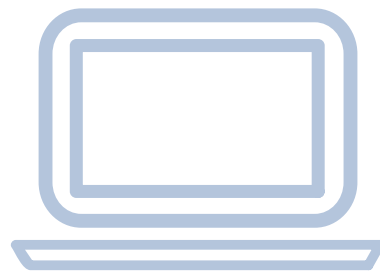
1. Networking
2. Advocacy and Promotion
3. Professional Development and Support
4. Research



# ADD OR UPDATE YOUR SLIC MEMBERSHIP

Ready to become a SLIC member or need to update your online SLIC profile? Here is how you can do so:

1. Visit [www.teachers.ab.ca](http://www.teachers.ab.ca).
2. Click login in the upper right hand corner of the screen.
3. Enter your login information (username@teachers.ab.ca).
4. Once you have logged in, click on Access Your Sites at the top of the screen.
5. Choose Specialist Council Membership
6. Select Click here to get a Specialist Council Membership
7. Don't forget to choose up to two Special Interest Groups (SIGS)



## CONTACT SLIC

Barnett House 11010 142 St  
Edmonton, AB T5N 2R1

(780)447-9400 or  
1-800-232-7208

[Michelle.Glavine@ata.ab.ca](mailto:Michelle.Glavine@ata.ab.ca)

[SLIC.teachers.ab.ca](http://SLIC.teachers.ab.ca)



Second Languages and  
  
Intercultural Council

## DID YOU KNOW?

Your SLIC membership is automatically renewed annually.



## LEARN MORE ABOUT SLIC

Visit the **website**

View the **brochure**

Watch SLIC **videos**

